

Multiple Regression Report

Dataset D:\...\2020_CCIMT_MVA_NCSS\2020_CCIMT_Data_NCSS_Final1.NCSS
 Dependent IMT_Zscore

Run Summary Report

Item	Value	Rows	Value
Dependent Variable	IMT_Zscore	Rows Processed	117
Number Ind. Variables	3	Rows Filtered Out	0
Weight Variable	None	Rows with X's Missing	0
R ²	0.2060	Rows with Weight Missing	0
Adj R ²	0.1850	Rows with Y Missing	0
Coefficient of Variation	0.6696	Rows Used in Estimation	117
Mean Square Error	0.735856	Sum of Weights	117.000
Square Root of MSE	0.8578205		
Ave Abs Pct Error	185.341		
Completion Status	Normal Completion		

Descriptive Statistics

Variable	Count	Mean	Standard Deviation	Minimum	Maximum
TC_HDL_Ratio	117	4.790342	1.464319	2.4	10.1
VitD3	117	14.31718	6.361767	2.9	31.4
(Smk=1)	117	0.1282051	0.335756	0	1
IMT_Zscore	117	1.281128	0.9501883	-0.868	4.057

Correlation Matrix

	TC_HDL_Ratio	VitD3	(Smk=1)	IMT_Zscore
TC_HDL_Ratio	1.0000	-0.0361	0.1696	0.2978
VitD3	-0.0361	1.0000	-0.0131	-0.1886
(Smk=1)	0.1696	-0.0131	1.0000	0.3403
IMT_Zscore	0.2978	-0.1886	0.3403	1.0000

Regression Coefficients T-Tests

Independent Variable	Regression Coefficient b(i)	Standard Error Sb(i)	Standardized Coefficient	T-Statistic to Test H0: $\beta(i)=0$	Prob Level	Reject H0 at 5%?	Power of Test at 5%
Intercept	0.8002995	0.3316273	0.0000	2.413	0.0174	Yes	0.6674
TC_HDL_Ratio	0.1564133	0.05522421	0.2410	2.832	0.0055	Yes	0.8018
VitD3	-0.02627826	0.01252807	-0.1759	-2.098	0.0382	Yes	0.5477
(Smk=1)	0.8407323	0.2407107	0.2971	3.493	0.0007	Yes	0.9336

Regression Coefficients Confidence Intervals

Independent Variable	Regression Coefficient b(i)	Standard Error Sb(i)	Lower 95% Conf. Limit of $\beta(i)$	Upper 95% Conf. Limit of $\beta(i)$
Intercept	0.8002995	0.3316273	0.143286	1.457313

TC_HDL_Ratio	0.1564133	0.05522421	0.04700415	0.2658224
VitD3	-0.02627826	0.01252807	-0.05109863	-0.00145788
(Smk=1)	0.8407323	0.2407107	0.3638411	1.317624

Note: The T-Value used to calculate these confidence limits was 1.981.

Multiple Regression Report

Dataset D:\...\2020_CCIMT_MVA_NCSS\2020_CCIMT_Data_NCSS_Final1.NCSS
 Dependent IMT_Zscore

Estimated Equation

IMT_Zscore =
 0.800299525817231 + 0.156413261584106 * TC_HDL_Ratio - 0.0262782565959847 * VitD3 + 0.840732344389344 *
 (Smk=1)

Storage Variables

Stored Item	First Variable	Last Variable
Predicted Y	C33	

This report lists the variables on the dataset into which various statistics were stored.

Analysis of Variance

Source	DF	R ² Lost If Term(s) Removed	Sum of Squares	Mean Square	F-Ratio	Prob Level	Power (5%)
Intercept	1		192.0309	192.0309			
Model	3	0.2060	21.57979	7.193262	9.775	0.0000	0.9973
Error	113	0.7940	83.15173	0.735856			
Total(Adjusted)	116		104.7315	0.9028579			

Analysis of Variance Detail

Source	DF	R ² Lost If Term(s) Removed	Sum of Squares	Mean Square	F-Ratio	Prob Level	Power (5%)
Intercept	1		192.0309	192.0309			
Model	3	0.2060	21.57979	7.193262	9.775	0.0000	0.9973
TC_HDL_Ratio	1	0.0564	5.903112	5.903112	8.022	0.0055	0.8018
VitD3	1	0.0309	3.237556	3.237556	4.400	0.0382	0.5477
Smk	1	0.0857	8.97672	8.97672	12.199	0.0007	0.9336
Error	113	0.7940	83.15173	0.735856			
Total(Adjusted)	116		104.7315	0.9028579			

PRESS Report

Parameter	From PRESS Residuals	From Regular Residuals
Sum of Squared Residuals	88.33546	83.15173
Sum of Residuals	80.72025	78.13809
R ²	0.1566	0.2060

Normality Tests

Test Name	Test Statistic to Test H0: Normal	Prob Level	Reject H0 at 20%?

Shapiro Wilk	0.982	0.1173	Yes
Anderson Darling	0.331	0.5136	No
D'Agostino Skewness	2.373	0.0177	Yes
D'Agostino Kurtosis	1.495	0.1348	Yes
D'Agostino Omnibus	7.866	0.0196	Yes

Multiple Regression Report

Dataset D:\...\2020_CCIMT_MVA_NCSS\2020_CCIMT_Data_NCSS_Final1.NCSS
 Dependent IMT_Zscore

Serial Correlation of Residuals

Lag	Serial Correlation	Lag	Serial Correlation	Lag	Serial Correlation
1	0.0503	9	0.1339	17	-0.1734
2	-0.1211	10	0.1393	18	0.1032
3	-0.0757	11	-0.0500	19	0.1070
4	0.0189	12	-0.1185	20	0.1358
5	0.2070	13	-0.0574	21	-0.0814
6	0.0306	14	0.1603	22	-0.0758
7	-0.1309	15	0.1811	23	0.0478
8	-0.0119	16	-0.0464	24	0.0494

Above serial correlations significant if their absolute values are greater than 0.1849

Durbin-Watson Test for Serial Correlation

Parameter	Test Statistic to Test H0: $\rho(1) = 0?$	Reject H0 at 20%?
Durbin-Watson Value	1.899	
Prob. Level: Positive Serial Correlation	0.2821	No
Prob. Level: Negative Serial Correlation	0.6941	No

R² Report

Independent Variable (IV)	Total R ² for this IV and IV's Above	Increase in R ² if this IV Included with IV's Above	Decrease in R ² if this IV was Removed	R ² if this IV was Fit Alone	Partial R ² if Adjusted for All Other IV's
TC_HDL_Ratio	0.0887	0.0887	0.0564	0.0887	0.0663
VitD3	0.1203	0.0317	0.0309	0.0356	0.0375
(Smk=1)	0.2060	0.0857	0.0857	0.1158	0.0974

Variable Omission Report

Independent Variable	R ² When I.V. Omitted	MSE When I.V. Omitted	Mallow's Cp When I.V. Omitted	H0: $\beta(i)=0$ Prob Level	R ² of Regress. of This I.V. on Other I.V.'s
Full Model	0.2060	0.735856			
TC_HDL_Ratio	0.1497	0.7811828	10.022	0.0055	0.0299
VitD3	0.1751	0.7578008	6.400	0.0382	0.0014
(Smk=1)	0.1203	0.8081443	14.199	0.0007	0.0288

Multiple Regression Report

Dataset D:\...\2020_CCIMT_MVA_NCSS\2020_CCIMT_Data_NCSS_Final1.NCSS
 Dependent IMT_Zscore

Sum of Squares and Correlations

Independent Variable	Sequential Sum of Squares	Incremental Sum of Squares	Last Sum of Squares	Simple Correlation	Partial Correlation
TC_HDL_Ratio	9.288053	9.288053	5.903112	0.2978	0.2575
VitD3	12.60307	3.315014	3.237556	-0.1886	-0.1936
(Smk=1)	21.57979	8.97672	8.97672	0.3403	0.3121

Multicollinearity Report

Independent Variable	Variance Inflation Factor	R ² Versus Other I.V.'s	Tolerance	Diagonal of X'X Inverse
TC_HDL_Ratio	1.0309	0.0299	0.9701	0.004144442
VitD3	1.0014	0.0014	0.9986	0.0002132926
(Smk=1)	1.0297	0.0288	0.9712	0.07874043

Eigenvalues of Centered Correlations

No.	Eigenvalue	Incremental Percent	Cumulative Percent	Condition Number
1	1.1765	39.218	39.218	1.000
2	0.9947	33.156	72.374	1.183
3	0.8288	27.626	100.000	1.420

All Condition Numbers less than 100. Multicollinearity is NOT a problem.

Eigenvector Percent of Regression-Coefficient-Variance using Centered Correlations

No.	Eigenvalue	TC_HDL_Ratio	VitD3	(Smk=1)
1	1.1765	40.4050	3.2090	38.9727
2	0.9947	0.4669	95.6693	4.1328
3	0.8288	59.1281	1.1217	56.8944

Multiple Regression Report

Dataset D:\...\2020_CCIMT_MVA_NCSS\2020_CCIMT_Data_NCSS_Final1.NCSS
 Dependent IMT_Zscore

Predicted Values with Prediction Limits of Individuals

Row	Actual IMT_Zscore	Predicted IMT_Zscore	Standard Error of Predicted	95% Lower Pred. Limit of Individual	95% Upper Pred. Limit of Individual
1	1.535	1.334973	0.8635106	-0.375797	3.045744
2	2.769	2.24315	0.8866317	0.4865724	3.999727
3	1.055	0.9156519	0.8671477	-0.8023241	2.633628
4	1.784	1.079331	0.863992	-0.6323931	2.791055
5	0.424	0.8724864	0.8662271	-0.8436658	2.588639
6	0.839	1.093716	0.8633223	-0.6166813	2.804113
7	2.585	1.373763	0.8643673	-0.338705	3.08623
8	1.331	1.151151	0.8634717	-0.5595419	2.861844
9	0.856	1.24926	0.8640732	-0.4626248	2.961145
10	4.006	1.539316	0.8696496	-0.1836171	3.262248
11	-0.198	1.132128	0.868368	-0.5882655	2.852522
12	0.898	1.174664	0.8626065	-0.5343145	2.883643
13	0.959	1.060434	0.8624905	-0.6483156	2.769183
14	1.369	1.278292	0.8658827	-0.437178	2.993762
15	1.771	1.273036	0.8656545	-0.4419815	2.988054
16	0.345	0.7061775	0.8807718	-1.03879	2.451145
17	1.846	0.7987105	0.8843678	-0.9533815	2.550802
18	2.673	1.085707	0.8641005	-0.6262321	2.797646
19	1.033	0.5680983	0.8792219	-1.173799	2.309995
20	0.541	0.9174065	0.8647039	-0.7957278	2.630541
21	0.821	1.074389	0.8656564	-0.6406321	2.789411
22	4.057	2.243527	0.8869025	0.4864129	4.00064
23	0.715	0.9276686	0.8644911	-0.7850441	2.640382
24	3.204	1.455979	0.8686696	-0.2650121	3.17697
25	1.675	0.6209689	0.8749804	-1.112525	2.354463
26	0.819	0.4817569	0.8843703	-1.27034	2.233854
27	-0.185	0.9093995	0.8649219	-0.8041669	2.622966
28	1.761	1.658411	0.8973269	-0.1193552	3.436178
29	1.456	0.7253931	0.8706031	-0.9994288	2.450215
30	2.516	1.219349	0.8628246	-0.4900622	2.92876
31	2.042	1.915938	0.9020873	0.1287406	3.703136
32	1.514	1.0443	0.8797047	-0.6985535	2.787154
33	1.381	1.155538	0.8660625	-0.5602881	2.871364
34	0.485	1.030156	0.8676131	-0.6887421	2.749054
35	2.032	1.262902	0.8679345	-0.4566331	2.982437
36	-0.501	1.038542	0.8728034	-0.6906391	2.767723
37	-0.026	1.158543	0.8694007	-0.5638971	2.880982
38	2.341	1.121753	0.8677233	-0.5973635	2.840869
39	0.148	0.6919202	0.871932	-1.035535	2.419375
40	0.086	1.205718	0.8706931	-0.5192823	2.930718
41	-0.304	0.9904873	0.8651922	-0.7236145	2.704589
42	1.042	1.025403	0.872193	-0.7025689	2.753374
43	1.714	1.098228	0.8678623	-0.6211637	2.81762
44	3.892	0.949688	0.8661853	-0.7663814	2.665757
45	0.244	1.153276	0.8663951	-0.5632085	2.869761

46	0.104	0.7304581	0.8708634	-0.9948793	2.455796
47	0.618	1.039788	0.863145	-0.6702581	2.749834
48	1.868	1.186192	0.8625553	-0.5226854	2.89507
49	1.763	1.011887	0.8680906	-0.7079573	2.731731
50	0.125	1.194578	0.8649487	-0.5190412	2.908198
51	-0.868	0.925671	0.8700362	-0.7980276	2.64937
52	1.375	0.800907	0.8688598	-0.9204611	2.522275

Multiple Regression Report

Dataset D:\...\2020_CCIMT_MVA_NCSS\2020_CCIMT_Data_NCSS_Final1.NCSS
 Dependent IMT_Zscore

Predicted Values with Prediction Limits of Individuals

Row	Actual IMT_Zscore	Predicted IMT_Zscore	Standard Error of Predicted	95% Lower Pred. Limit of Individual	95% Upper Pred. Limit of Individual
53	1.859	1.053304	0.8648023	-0.6600255	2.766633
54	0.522	0.7911494	0.8681042	-0.9287215	2.51102
55	-0.358	0.9773481	0.8650746	-0.7365207	2.691217
56	0.982	1.119376	0.869958	-0.6041674	2.84292
57	0.602	1.042292	0.8647419	-0.6709175	2.755502
58	0.911	0.8675973	0.8771883	-0.870271	2.605465
59	1.728	0.8306924	0.8674762	-0.8879343	2.549319
60	1.298	2.045696	0.8905111	0.2814332	3.809959
61	-0.184	0.7885112	0.888756	-0.9722748	2.549297
62	1.478	0.8260546	0.8751209	-0.9077178	2.559827
63	1.436	1.251011	0.8628668	-0.458484	2.960505
64	1.34	1.9195	0.8907773	0.1547094	3.68429
65	1.899	2.267114	0.8873039	0.5092051	4.025023
66	0.179	1.269403	0.86259	-0.4395429	2.97835
67	1.666	1.149403	0.8621531	-0.558678	2.857483
68	0.665	1.186444	0.8634115	-0.5241303	2.897017
69	0.27	1.047294	0.8625747	-0.6616216	2.756211
70	1.27	1.349118	0.8686023	-0.3717403	3.069975
71	1.229	1.214596	0.8621659	-0.4935102	2.922702
72	2.445	1.205215	0.866197	-0.5108773	2.921308
73	0.984	1.568347	0.8719515	-0.1591457	3.29584
74	0.323	1.108855	0.8663333	-0.6075078	2.825217
75	0.798	1.039411	0.8626471	-0.6696485	2.74847
76	0.333	1.117366	0.8627933	-0.5919829	2.826715
77	2.561	1.896277	0.8991281	0.1149418	3.677612
78	2.023	1.551701	0.8690385	-0.170021	3.273423
79	0.584	1.100092	0.875936	-0.6352953	2.835479
80	1.742	1.172927	0.8621546	-0.5351563	2.881011
81	2.044	2.265293	0.8937303	0.4946517	4.035933
82	2.263	1.342354	0.8638693	-0.3691266	3.053835
83	0.723	1.778563	0.8808313	0.03347738	3.523649
84	0.581	1.529422	0.8753431	-0.2047905	3.263635
85	0.746	1.594249	0.8717804	-0.1329055	3.321403
86	1.452	1.396785	0.8665956	-0.3200973	3.113667
87	2.619	1.246748	0.8729911	-0.4828052	2.9763
88	0.494	1.457476	0.8662226	-0.2586671	3.173619
89	1.239	1.5218	0.8740267	-0.2098042	3.253405
90	0.957	1.408804	0.8668641	-0.3086105	3.126218
91	2.562	2.646076	0.8981764	0.8666266	4.425526
92	0.845	1.029025	0.8627861	-0.6803096	2.73836
93	1.806	1.346354	0.8713897	-0.3800266	3.072734
94	1.153	0.8535891	0.8662972	-0.862702	2.56988
95	2.716	1.726007	0.8795195	-0.01648015	3.468493
96	1.305	1.10072	0.8688149	-0.620559	2.821999
97	1.089	0.8543429	0.8672085	-0.8637536	2.572439

98	2.712	1.358624	0.8640842	-0.3532829	3.07053
99	1.96	1.688222	0.8753302	-0.04596464	3.422409
100	2.031	1.805344	0.8807654	0.06038873	3.550299
101	-0.168	1.470238	0.8673344	-0.2481076	3.188584
102	0.041	1.286793	0.8658596	-0.4286309	3.002217
103	1.493	2.151453	0.9141684	0.3403201	3.962585
104	0.448	1.225107	0.8622473	-0.4831602	2.933375

Multiple Regression Report

Dataset D:\...\2020_CCIMT_MVA_NCSS\2020_CCIMT_Data_NCSS_Final1.NCSS
 Dependent IMT_Zscore

Predicted Values with Prediction Limits of Individuals

Row	Actual IMT_Zscore	Predicted IMT_Zscore	Standard Error of Predicted	95% Lower Pred. Limit of Individual	95% Upper Pred. Limit of Individual
105	1.917	1.710742	0.8766893	-0.02613766	3.447622
106	2.206	1.877918	0.8866594	0.1212857	3.63455
107	1.794	2.439724	0.9056968	0.6453751	4.234073
108	2.188	1.979624	0.8874662	0.2213931	3.737854
109	1.98	2.121087	0.8876813	0.3624299	3.879744
110	0.618	0.9511223	0.8770361	-0.7864443	2.688689
111	0.103	1.107609	0.8623151	-0.6007931	2.816011
112	1.675	2.128897	0.8976429	0.3505044	3.90729
113	1.84	2.039687	0.886703	0.2829684	3.796405
114	1.418	1.01864	0.8629689	-0.6910573	2.728337
115	2.204	1.422194	0.8691387	-0.2997265	3.144115
116	0.519	1.069435	0.873682	-0.6614863	2.800357
117	1.399	1.289672	0.8644361	-0.4229317	3.002276

Multiple Regression Report

Dataset D:\...\2020_CCIMT_MVA_NCSS\2020_CCIMT_Data_NCSS_Final1.NCSS
 Dependent IMT_Zscore

Residual Report

Row	Actual IMT_Zscore	Predicted IMT_Zscore	Residual	Absolute Percent Error	Sqrt(MSE) Without This Row
1	1.535	1.334973	0.2000267	13.031	0.8614314
2	2.769	2.24315	0.5258502	18.991	0.8601025
3	1.055	0.9156519	0.1393481	13.208	0.8615387
4	1.784	1.079331	0.7046692	39.499	0.8590271
5	0.424	0.8724864	-0.4484864	105.775	0.8605778
6	0.839	1.093716	-0.2547159	30.359	0.8613009
7	2.585	1.373763	1.211237	46.856	0.8538871
8	1.331	1.151151	0.1798488	13.512	0.8614717
9	0.856	1.24926	-0.3932601	45.942	0.860828
10	4.006	1.539316	2.466684	61.575	0.8285821
11	-0.198	1.132128	-1.330128	671.782	0.8521904
12	0.898	1.174664	-0.2766644	30.809	0.8612404
13	0.959	1.060434	-0.1014336	10.577	0.8615876
14	1.369	1.278292	0.09070817	6.626	0.8615981
15	1.771	1.273036	0.4979638	28.118	0.8603318
16	0.345	0.7061775	-0.3611775	104.689	0.8609266
17	1.846	0.7987105	1.047289	56.733	0.8555562
18	2.673	1.085707	1.587293	59.382	0.8482895
19	1.033	0.5680983	0.4649017	45.005	0.8604614
20	0.541	0.9174065	-0.3764065	69.576	0.8608951
21	0.821	1.074389	-0.2533893	30.863	0.8613026
22	4.057	2.243527	1.813473	44.700	0.8431419
23	0.715	0.9276686	-0.2126686	29.744	0.8614035
24	3.204	1.455979	1.748021	54.557	0.8452406
25	1.675	0.6209689	1.054031	62.927	0.855622
26	0.819	0.4817569	0.3372431	41.177	0.8610125
27	-0.185	0.9093995	-1.094399	591.567	0.8553078
28	1.761	1.658411	0.1025887	5.826	0.8615813
29	1.456	0.7253931	0.730607	50.179	0.8587856
30	2.516	1.219349	1.296651	51.536	0.8527818
31	2.042	1.915938	0.1260618	6.173	0.8615494
32	1.514	1.0443	0.4696999	31.024	0.8604354
33	1.381	1.155538	0.2254622	16.326	0.8613729
34	0.485	1.030156	-0.5451559	112.403	0.8600641
35	2.032	1.262902	0.7690982	37.849	0.8584966
36	-0.501	1.038542	-1.539542	307.294	0.8488173
37	-0.026	1.158543	-1.184543	4555.933	0.8541359
38	2.341	1.121753	1.219247	52.082	0.8537199
39	0.148	0.6919202	-0.5439202	367.514	0.8600547
40	0.086	1.205718	-1.119718	1301.997	0.8549168
41	-0.304	0.9904873	-1.294487	425.818	0.8527613
42	1.042	1.025403	0.01659722	1.593	0.86164
43	1.714	1.098228	0.6157719	35.926	0.8596272
44	3.892	0.949688	2.942312	75.599	0.814607
45	0.244	1.153276	-0.9092765	372.654	0.8572589
46	0.104	0.7304581	-0.6264582	602.364	0.8595414

47	0.618	1.039788	-0.4217878	68.250	0.8607076
48	1.868	1.186192	0.6818077	36.499	0.8592026
49	1.763	1.011887	0.7511132	42.604	0.8586411
50	0.125	1.194578	-1.069578	855.663	0.8555925
51	-0.868	0.925671	-1.793671	206.644	0.8443059
52	1.375	0.800907	0.574093	41.752	0.8598867
53	1.859	1.053304	0.8056962	43.340	0.8582155

Multiple Regression Report

Dataset D:\...\2020_CCIMT_MVA_NCSS\2020_CCIMT_Data_NCSS_Final1.NCSS
 Dependent IMT_Zscore

Residual Report

Row	Actual IMT_Zscore	Predicted IMT_Zscore	Residual	Absolute Percent Error	Sqrt(MSE) Without This Row
54	0.522	0.7911494	-0.2691494	51.561	0.8612568
55	-0.358	0.9773481	-1.335348	373.002	0.8521913
56	0.982	1.119376	-0.1373764	13.989	0.8615409
57	0.602	1.042292	-0.4402921	73.138	0.86062
58	0.911	0.8675973	0.04340275	4.764	0.8616313
59	1.728	0.8306924	0.8973076	51.928	0.8573626
60	1.298	2.045696	-0.7476963	57.604	0.8584954
61	-0.184	0.7885112	-0.9725112	528.539	0.8563367
62	1.478	0.8260546	0.6519455	44.110	0.8593428
63	1.436	1.251011	0.1849894	12.882	0.8614621
64	1.34	1.9195	-0.5795	43.246	0.8597517
65	1.899	2.267114	-0.3681143	19.385	0.8608863
66	0.179	1.269403	-1.090403	609.164	0.8553891
67	1.666	1.149403	0.5165973	31.008	0.8602436
68	0.665	1.186444	-0.5214435	78.413	0.8602129
69	0.27	1.047294	-0.7772944	287.887	0.8584701
70	1.27	1.349118	-0.07911749	6.230	0.8616083
71	1.229	1.214596	0.01440413	1.172	0.8616405
72	2.445	1.205215	1.239785	50.707	0.8534797
73	0.984	1.568347	-0.5843473	59.385	0.8598096
74	0.323	1.108855	-0.7858547	243.299	0.8583705
75	0.798	1.039411	-0.2414109	30.252	0.8613361
76	0.333	1.117366	-0.7843663	235.545	0.8584104
77	2.561	1.896277	0.6647232	25.956	0.859098
78	2.023	1.551701	0.4712991	23.297	0.8604588
79	0.584	1.100092	-0.5160918	88.372	0.8601988
80	1.742	1.172927	0.5690725	32.668	0.8599448
81	2.044	2.265293	-0.2212927	10.826	0.8613641
82	2.263	1.342354	0.9206457	40.683	0.8571755
83	0.723	1.778563	-1.055563	145.998	0.8555149
84	0.581	1.529422	-0.9484221	163.240	0.8567667
85	0.746	1.594249	-0.8482487	113.706	0.8577784
86	1.452	1.396785	0.05521512	3.803	0.8616254
87	2.619	1.246748	1.372252	52.396	0.8514639
88	0.494	1.457476	-0.9634761	195.036	0.8567213
89	1.239	1.5218	-0.2828002	22.825	0.8612106
90	0.957	1.408804	-0.4518037	47.210	0.8605604
91	2.562	2.646076	-0.08407611	3.282	0.861601
92	0.845	1.029025	-0.1840253	21.778	0.861464
93	1.806	1.346354	0.4596463	25.451	0.8605101
94	1.153	0.8535891	0.2994109	25.968	0.8611676
95	2.716	1.726007	0.9899935	36.450	0.8562726
96	1.305	1.10072	0.20428	15.654	0.8614196
97	1.089	0.8543429	0.2346571	21.548	0.8613498
98	2.712	1.358624	1.353376	49.903	0.851956
99	1.96	1.688222	0.2717777	13.866	0.8612423

100	2.031	1.805344	0.2256562	11.111	0.8613626
101	-0.168	1.470238	-1.638238	975.142	0.8472997
102	0.041	1.286793	-1.245793	3038.520	0.8534067
103	1.493	2.151453	-0.6584526	44.103	0.8590386
104	0.448	1.225107	-0.7771072	173.461	0.8584741
105	1.917	1.710742	0.206258	10.759	0.8614109
106	2.206	1.877918	0.3280821	14.872	0.8610427

Multiple Regression Report

Dataset D:\...\2020_CCIMT_MVA_NCSS\2020_CCIMT_Data_NCSS_Final1.NCSS
 Dependent IMT_Zscore

Residual Report

Row	Actual IMT_Zscore	Predicted IMT_Zscore	Residual	Absolute Percent Error	Sqrt(MSE) Without This Row
107	1.794	2.439724	-0.6457238	35.994	0.8591977
108	2.188	1.979624	0.2083762	9.524	0.8613995
109	1.98	2.121087	-0.1410867	7.126	0.8615305
110	0.618	0.9511223	-0.3331223	53.903	0.8610391
111	0.103	1.107609	-1.004609	975.348	0.8563407
112	1.675	2.128897	-0.453897	27.098	0.8604612
113	1.84	2.039687	-0.1996869	10.853	0.8614197
114	1.418	1.01864	0.3993604	28.164	0.8608047
115	2.204	1.422194	0.7818059	35.472	0.8583822
116	0.519	1.069435	-0.5504352	106.057	0.8600094
117	1.399	1.289672	0.1093278	7.815	0.8615786

Multiple Regression Report

Dataset D:\...\2020_CCIMT_MVA_NCSS\2020_CCIMT_Data_NCSS_Final1.NCSS
 Dependent IMT_Zscore

Regression Diagnostics

Row	Standardized Residual	RStudent	Hat Diagonal	Cook's D	Dffits	CovRatio
1	0.2347476	0.2337636	0.0133	0.0002	0.02715087	1.048
2	0.6350791	0.6333942	0.0683	0.0074	0.1714945	1.096
3	0.1642499	0.1635411	0.0219	0.0002	0.02445099	1.058
4	0.8274608	0.8262985	0.0144	0.0025	0.1000198	1.026
5	-0.5280468	-0.526355	0.0197	0.0014	-0.07460827	1.047
6	-0.298863	-0.2976553	0.0129	0.0003	-0.03398525	1.046
7	1.422937	1.429492	0.0153	0.0079	0.1783176	0.979
8	0.2110575	0.210163	0.0132	0.0001	0.0243246	1.048
9	-0.4618321	-0.4602186	0.0146	0.0008	-0.05607972	1.044
10	2.916302	3.019211	0.0278	0.0607	0.5102621	0.779
11	-1.570137	-1.58051	0.0247	0.0156	-0.2517452	0.973
12	-0.3243399	-0.323052	0.0112	0.0003	-0.0343654	1.044
13	-0.1188965	-0.1183766	0.0109	0.0000	-0.01243694	1.047
14	0.1067555	0.1062874	0.0189	0.0001	0.01474631	1.056
15	0.5858989	0.5841886	0.0183	0.0016	0.07986787	1.043
16	-0.432943	-0.431381	0.0542	0.0027	-0.1032937	1.088
17	1.261149	1.264487	0.0629	0.0267	0.3274697	1.045
18	1.864127	1.885071	0.0147	0.0130	0.2302138	0.928
19	0.5561881	0.5544811	0.0505	0.0041	0.127901	1.079
20	-0.4423725	-0.4407926	0.0161	0.0008	-0.05640911	1.046
21	-0.2981357	-0.2969304	0.0184	0.0004	-0.04060005	1.052
22	2.190933	2.229076	0.0690	0.0889	0.6066216	0.936
23	-0.2498757	-0.2488364	0.0156	0.0002	-0.03133815	1.050
24	2.064188	2.094909	0.0255	0.0278	0.3385682	0.912
25	1.254336	1.257559	0.0404	0.0166	0.2580597	1.021
26	0.4061103	0.4046047	0.0629	0.0028	0.1047876	1.099
27	-1.28653	-1.29031	0.0166	0.0070	-0.1677727	0.993
28	0.1256592	0.1251107	0.0942	0.0004	0.04035335	1.143
29	0.8647828	0.863811	0.0300	0.0058	0.1519768	1.040
30	1.520486	1.52947	0.0117	0.0068	0.1664217	0.965
31	0.1554129	0.1547402	0.1059	0.0007	0.0532464	1.158
32	0.5622703	0.5605615	0.0517	0.0043	0.1308514	1.080
33	0.2654062	0.2643116	0.0193	0.0003	0.03708708	1.054
34	-0.6429371	-0.64126	0.0230	0.0024	-0.09830601	1.045
35	0.9073987	0.906684	0.0237	0.0050	0.1413266	1.031
36	-1.827195	-1.846576	0.0352	0.0305	-0.3529069	0.953
37	-1.400033	-1.406073	0.0272	0.0137	-0.2350324	0.993
38	1.438127	1.445035	0.0232	0.0123	0.2228057	0.985
39	-0.6448579	-0.6431828	0.0332	0.0036	-0.1191359	1.056
40	-1.325499	-1.330001	0.0302	0.0137	-0.2348509	1.004
41	-1.522237	-1.531268	0.0173	0.0102	-0.2029376	0.971
42	0.01968354	0.01959628	0.0338	0.0000	0.003664651	1.072
43	0.7264376	0.7249107	0.0235	0.0032	0.1125771	1.042
44	3.464098	3.647862	0.0196	0.0600	0.5157484	0.675
45	-1.070796	-1.071498	0.0201	0.0059	-0.1534279	1.015
46	-0.7417427	-0.7402576	0.0306	0.0043	-0.1316101	1.048

47	-0.4947874	-0.4931277	0.0125	0.0008	-0.05537458	1.040
48	0.79925	0.7979643	0.0111	0.0018	0.0844245	1.024
49	0.8863468	0.8854997	0.0241	0.0048	0.139118	1.033
50	-1.257392	-1.260666	0.0167	0.0067	-0.1642344	0.996
51	-2.121612	-2.155573	0.0287	0.0332	-0.3704242	0.907
52	0.6780862	0.6764568	0.0259	0.0031	0.1103112	1.047
53	0.9470073	0.9465714	0.0163	0.0037	0.1220155	1.020

Multiple Regression Report

Dataset D:\...\2020_CCIMT_MVA_NCSS\2020_CCIMT_Data_NCSS_Final1.NCSS
 Dependent IMT_Zscore

Regression Diagnostics

Row	Standardized Residual	RStudent	Hat Diagonal	Cook's D	Dffits	CovRatio
54	-0.3176134	-0.3163461	0.0241	0.0006	-0.04973393	1.058
55	-1.570066	-1.580437	0.0170	0.0106	-0.2077413	0.965
56	-0.1624778	-0.1617761	0.0285	0.0002	-0.02770803	1.066
57	-0.5174776	-0.5157943	0.0162	0.0011	-0.06619273	1.043
58	0.05179293	0.05156386	0.0457	0.0000	0.0112795	1.086
59	1.058077	1.058642	0.0226	0.0065	0.1611197	1.019
60	-0.9075816	-0.9068681	0.0777	0.0173	-0.2631648	1.091
61	-1.177764	-1.179805	0.0734	0.0275	-0.332121	1.064
62	0.7759741	0.7745995	0.0407	0.0064	0.1596368	1.057
63	0.2169342	0.2160171	0.0118	0.0001	0.02360501	1.047
64	-0.7036645	-0.7020839	0.0783	0.0105	-0.2046534	1.105
65	-0.4449656	-0.443381	0.0699	0.0037	-0.1215691	1.106
66	-1.278279	-1.281913	0.0112	0.0046	-0.1361279	0.989
67	0.6052933	0.6035884	0.0101	0.0009	0.06105031	1.033
68	-0.6118845	-0.6101827	0.0131	0.0012	-0.07024027	1.036
69	-0.9112054	-0.9105158	0.0111	0.0023	-0.09653187	1.017
70	-0.09341995	-0.09300926	0.0253	0.0001	-0.01498346	1.063
71	0.01687747	0.01680265	0.0102	0.0000	0.001702056	1.047
72	1.459667	1.467091	0.0196	0.0107	0.2075713	0.979
73	-0.6928038	-0.691201	0.0332	0.0041	-0.1281219	1.054
74	-0.9253815	-0.9247886	0.0199	0.0044	-0.1319307	1.026
75	-0.2830251	-0.2818699	0.0113	0.0002	-0.03011332	1.045
76	-0.919734	-0.919102	0.0116	0.0025	-0.09968977	1.017
77	0.8161918	0.8149781	0.0986	0.0182	0.2695827	1.123
78	0.5567924	0.5550852	0.0263	0.0021	0.09127299	1.053
79	-0.6148971	-0.613197	0.0427	0.0042	-0.1294776	1.068
80	0.6667794	0.6651322	0.0101	0.0011	0.06728737	1.030
81	-0.2697572	-0.2686474	0.0855	0.0017	-0.08213089	1.130
82	1.080914	1.081728	0.0142	0.0042	0.1296069	1.008
83	-1.265397	-1.268807	0.0544	0.0230	-0.3042358	1.035
84	-1.129165	-1.130554	0.0413	0.0137	-0.2345664	1.033
85	-1.005475	-1.005525	0.0328	0.0086	-0.185206	1.034
86	0.06503896	0.06475174	0.0206	0.0000	0.009382413	1.058
87	1.629025	1.641186	0.0357	0.0245	0.3157018	0.977
88	-1.134388	-1.135844	0.0197	0.0065	-0.1609564	1.010
89	-0.3361458	-0.3348226	0.0381	0.0011	-0.0666741	1.073
90	-0.5323602	-0.5306653	0.0212	0.0015	-0.07809144	1.048
91	-0.1031014	-0.1026491	0.0963	0.0003	-0.03350909	1.146
92	-0.2157829	-0.2148703	0.0116	0.0001	-0.02328857	1.047
93	0.5445833	0.5428811	0.0319	0.0024	0.09852517	1.059
94	0.3525554	0.3511852	0.0199	0.0006	0.04999126	1.053
95	1.184829	1.186971	0.0512	0.0190	0.2758195	1.039
96	0.2412709	0.2402628	0.0258	0.0004	0.03909769	1.061
97	0.2766111	0.2754777	0.0220	0.0004	0.04132441	1.057
98	1.589383	1.600323	0.0147	0.0094	0.1951812	0.961
99	0.3235658	0.3222802	0.0412	0.0011	0.06684044	1.077

100	0.2704916	0.2693793	0.0542	0.0010	0.06449286	1.093
101	-1.93143	-1.955412	0.0223	0.0213	-0.2953483	0.927
102	-1.466147	-1.47373	0.0188	0.0103	-0.2041648	0.978
103	-0.8256447	-0.824474	0.1357	0.0268	-0.3266744	1.170
104	-0.9106326	-0.9099392	0.0103	0.0022	-0.09304466	1.017
105	0.2459765	0.2449512	0.0445	0.0007	0.0528474	1.082
106	0.3962451	0.3947623	0.0684	0.0029	0.1069398	1.106

Multiple Regression Report

Dataset D:\...\2020_CCIMT_MVA_NCSS\2020_CCIMT_Data_NCSS_Final1.NCSS
 Dependent IMT_Zscore

Regression Diagnostics

Row	Standardized Residual	RStudent	Hat Diagonal	Cook's D	Dffits	CovRatio
107	-0.8000451	-0.7987627	0.1147	0.0207	-0.2875647	1.144
108	0.251932	0.2508853	0.0703	0.0012	0.06899614	1.112
109	-0.1706249	-0.1698901	0.0708	0.0006	-0.04690679	1.114
110	-0.3974427	-0.395957	0.0453	0.0019	-0.08625362	1.079
111	-1.177319	-1.179353	0.0105	0.0037	-0.1215263	0.997
112	-0.5562074	-0.5545004	0.0950	0.0081	-0.1796558	1.132
113	-0.2411878	-0.2401801	0.0685	0.0011	-0.06511761	1.110
114	0.4683805	0.4667567	0.0120	0.0007	0.0515255	1.041
115	0.9237373	0.9231329	0.0266	0.0058	0.1524911	1.033
116	-0.6539875	-0.652323	0.0373	0.0041	-0.1284425	1.060
117	0.1284467	0.1278864	0.0155	0.0001	0.01603802	1.052

Multiple Regression Report

Dataset D:\...\2020_CCIMT_MVA_NCSS\2020_CCIMT_Data_NCSS_Final1.NCSS
 Dependent IMT_Zscore

DFBETAS Report

Row	TC_HDL_Ratio	VitD3	(Smk=1)	Intercept
1	0.008786116	-0.01050832	-0.009849758	0.004794341
2	0.02342541	-0.0116379	0.151773	-0.01200809
3	-0.002526559	0.01788558	-0.005116598	-0.0035263
4	-0.04896561	-0.03020616	-0.02116055	0.07576873
5	0.05066064	-0.01338587	0.009801248	-0.04583791
6	-0.004493881	-0.01610963	0.01102102	0.00464894
7	0.1012387	-0.03117161	-0.06791901	-0.02573026
8	0.007217017	0.01028105	-0.008483429	-0.00585093
9	0.006917734	0.0316799	0.01543472	-0.03433935
10	0.205497	-0.34799	-0.1463739	0.1056076
11	-0.1090857	-0.1660277	0.07227942	0.1347086
12	-0.008747578	-0.008645818	0.01272323	0.003287792
13	0.003751895	-0.001174676	0.003506572	-0.005315436
14	-0.002383568	-0.01002023	-0.003474405	0.01001671
15	-0.013038	-0.05333699	-0.01907891	0.05405999
16	0.01037982	-0.09250099	0.01253658	0.03077733
17	0.03840033	0.2995314	-0.04827068	-0.1592693
18	0.04157093	0.1275001	-0.07175334	-0.05345939
19	-0.06433261	0.09283769	-0.007758042	0.0144085
20	0.0235698	-0.02544853	0.01119551	-0.01590417
21	0.02264994	0.01673208	0.006843186	-0.03438056
22	0.03576329	-0.1032355	0.5414353	0.02799749
23	0.01706859	-0.008013523	0.005761525	-0.01536256
24	0.06002141	-0.2563862	-0.08765414	0.1458647
25	-0.168054	0.1431113	-0.0144721	0.08638302
26	-0.05500855	0.07706648	-0.004266426	0.01183549
27	0.09686376	-0.04318662	0.02845942	-0.08532641
28	-0.02129111	0.004061533	0.0348982	0.01444621
29	-0.1088858	0.05703758	-0.01142221	0.07646343
30	0.06084025	0.03016596	-0.06368805	-0.02490817
31	-0.02731004	-0.01836561	0.04327616	0.0313097
32	-0.08776934	-0.08152295	-0.006270924	0.1274177
33	-0.01609056	-0.02099023	-0.006866051	0.0307283
34	0.06377883	0.04051302	0.01236594	-0.08828299
35	-0.03865898	-0.1023805	-0.02682606	0.108997
36	0.2357847	0.1931994	0.02816756	-0.3367687
37	0.1148369	0.1526189	0.03229412	-0.2086761
38	-0.1167511	-0.1266348	-0.0329086	0.197014
39	0.08651688	-0.04712678	0.007557864	-0.05869114
40	0.1009147	0.1679595	0.03223562	-0.2042038
41	0.1298718	0.03486671	0.03237575	-0.1596214
42	-0.002495318	-0.001903162	-0.0002976591	0.003488358
43	-0.0631909	-0.06048613	-0.01568917	0.100802
44	-0.03386915	0.3616374	-0.1182797	-0.0761226
45	-0.0660485	-0.08991866	0.04786302	0.0729369
46	0.06454252	-0.08498214	0.01421184	-0.02346733
47	0.02547467	0.002679665	0.01304807	-0.03395585

48	-0.01100531	-0.02670471	-0.02651331	0.04343035
49	-0.09384688	-0.0548651	-0.01609945	0.1258529
50	0.05189868	0.09356713	0.03682172	-0.1235412
51	0.284324	0.107063	0.02954395	-0.3358198
52	-0.04129002	0.07507295	-0.01596462	0.008971581
53	-0.06853141	-0.03784681	-0.02220362	0.09830509
54	0.03217596	-0.01968447	0.005471691	-0.02260946
55	0.1336227	0.02434117	0.03332769	-0.1581008
56	0.01531009	0.01692509	0.003355248	-0.02530822
57	0.03793179	0.01836616	0.01196847	-0.05280302
58	0.001375546	0.009942002	-0.001948725	-0.0051263
59	-0.1156178	0.0327444	-0.01736396	0.09980962
60	0.07723124	0.06464206	-0.2366129	-0.09542918
61	-0.0503085	-0.3065839	0.04738652	0.1744459
62	-7.320866E-05	0.1390254	-0.02581691	-0.05524842
63	0.000849333	-0.00963604	-0.007861282	0.01007011

Multiple Regression Report

Dataset D:\...\2020_CCIMT_MVA_NCSS\2020_CCIMT_Data_NCSS_Final1.NCSS
 Dependent IMT_Zscore

DFBETAS Report (Continued)

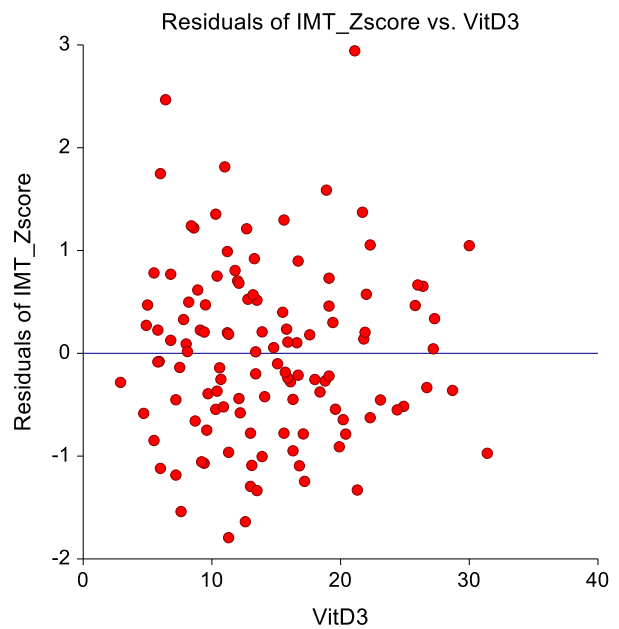
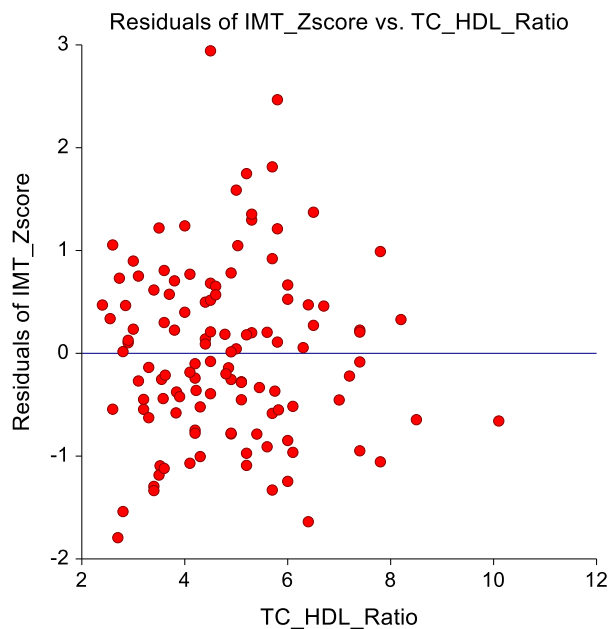
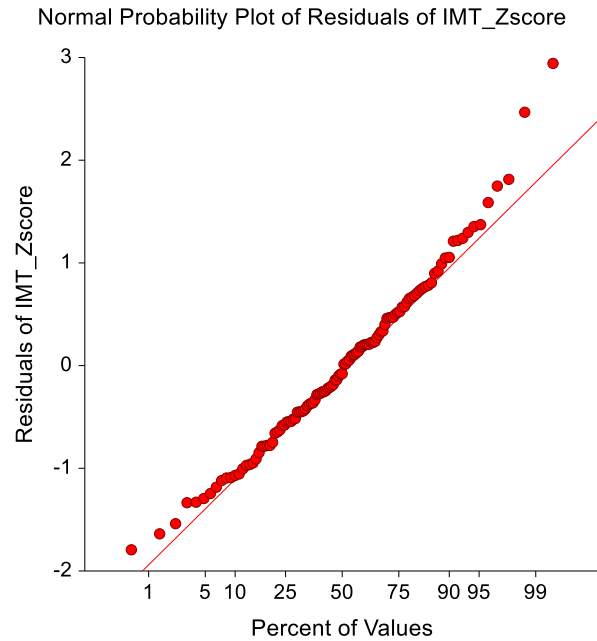
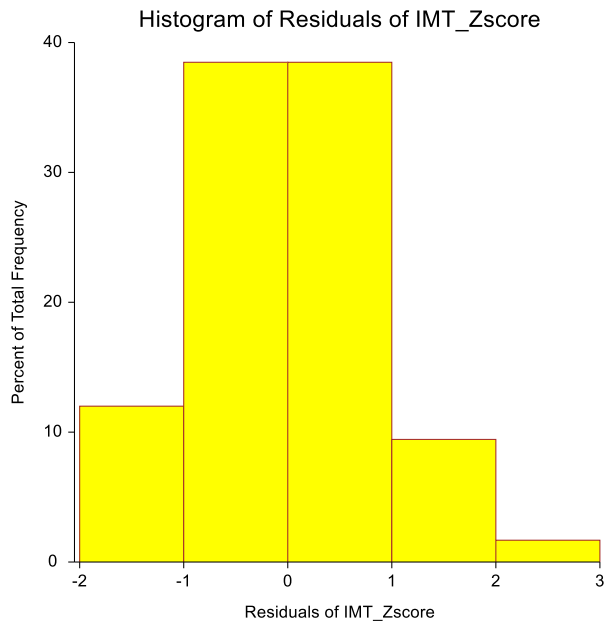
Row	TC_HDL_Ratio	VitD3	(Smk=1)	Intercept
64	0.07627622	0.02289278	-0.1863931	-0.0720512
65	-0.008458568	0.02452276	-0.1074726	-0.006679283
66	-0.04106028	0.02207672	0.05229522	-0.01255339
67	-0.007893825	-0.007785941	-0.01995699	0.02577786
68	0.01670263	0.03147758	0.01903258	-0.04569956
69	0.02863126	-0.01572224	0.02692649	-0.03708452
70	0.001585557	0.01166568	0.003173603	-0.009952554
71	0.0002142986	-0.000226451	-0.0006293693	0.0003834825
72	-0.07077037	-0.1310188	-0.04145452	0.1639342
73	-0.04205167	0.09749997	0.03296253	-0.03779872
74	-0.04520797	-0.08400892	0.0392218	0.05719805
75	0.008821458	-0.006109579	0.008327544	-0.01077463
76	-0.01344947	-0.03756058	0.034096	0.007432048
77	0.03633707	0.1502597	0.199721	-0.1098645
78	0.06035788	-0.0377149	-0.03038802	-0.01248461
79	-0.05998929	-0.09852094	0.03080136	0.08441887
80	-0.004495689	-0.01136083	-0.02274138	0.02662739
81	-0.0326197	-0.02161159	-0.0614848	0.03722096
82	0.06987885	-0.01426885	-0.05010992	-0.019276
83	-0.2573964	0.08914823	0.09043173	0.1198486
84	-0.2021636	-0.03981354	0.07413899	0.1503757
85	-0.08131938	0.1291832	0.05119996	-0.03237088
86	0.006773143	0.0006633448	-0.003426982	-0.003996371
87	0.2003239	0.1861012	-0.08998062	-0.215134
88	-0.10197	0.04751701	0.0580049	0.02488162
89	-0.006926518	0.05677876	0.01383964	-0.03402013
90	-0.01204135	0.05552271	0.02150392	-0.03428465
91	-0.01320701	0.01261924	-0.02324857	0.003486204
92	0.00813883	-0.003978959	0.006118111	-0.009687969
93	0.07251752	0.04073232	-0.03105785	-0.06479033
94	-0.02411672	0.02530596	-0.0079719	0.01413529
95	0.2416206	-0.04766615	-0.08420529	-0.132185
96	0.01509803	0.02733167	-0.01071308	-0.02044804
97	-0.03020209	0.004856513	-0.004543048	0.02804713
98	0.05946096	-0.09317871	-0.06762756	0.04490097
99	0.03667325	-0.0441057	-0.01829614	0.003580076
100	0.04703704	-0.03292495	-0.01808838	-0.01190677
101	-0.2152667	0.04305208	0.1061902	0.09483171
102	-0.1270783	-0.06624454	0.07269212	0.0975436
103	-0.306037	0.06255104	0.08374088	0.182898
104	-0.01142253	0.01760794	0.03412455	-0.02380957
105	0.04300641	-0.01661136	-0.01627018	-0.01826796
106	0.090927	-0.03594422	-0.03018903	-0.04124091
107	-0.1700955	-0.08139323	-0.1738774	0.1771216
108	-0.01569388	-0.001299036	0.06446521	0.01297547
109	0.006951302	0.009237492	-0.04293281	-0.01044275
110	-0.02219875	-0.07377445	0.01696986	0.04707196

111	0.03045359	0.008815015	0.03636793	-0.05865709
112	-0.06134852	-0.0786339	-0.1290866	0.09059486
113	0.01026579	0.00289421	-0.06082694	-0.009595865
114	-0.02075388	0.007169617	-0.01279108	0.02425009
115	0.008158482	-0.1204962	-0.03563681	0.08266643
116	-0.05148776	-0.09924787	0.03068112	0.07719847
117	0.009265076	0.003234598	-0.006033801	-0.005729327

Multiple Regression Report

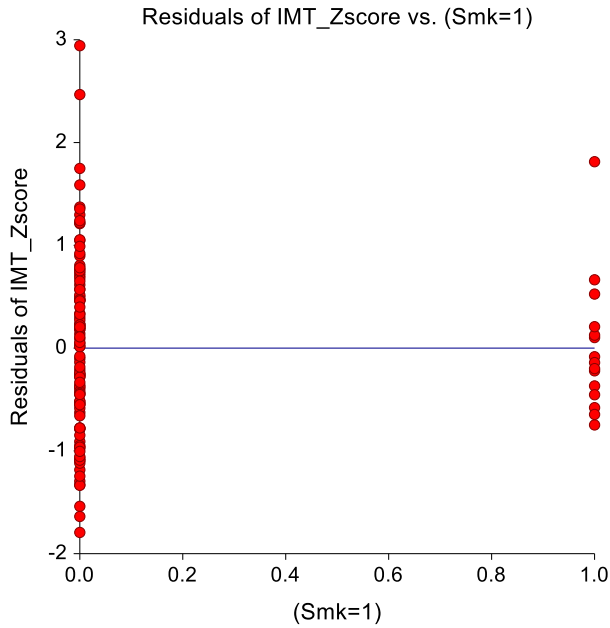
Dataset D:\...\2020_CCIMT_MVA_NCSS\2020_CCIMT_Data_NCSS_Final1.NCSS
Dependent IMT_Zscore

Plots Section



Multiple Regression Report

Dataset D:\...\2020_CCIMT_MVA_NCSS\2020_CCIMT_Data_NCSS_Final1.NCSS
Dependent IMT_Zscore



Procedure Input Settings

Autosaved Template File

C:\Users\DELL\Documents\NCSS 12\Procedure Templates\Autosave\Multiple Regression - Autosaved 2020_6_21-10_39_22.t157

Variables, Model Tab

```

-- Variables -----
Y:                    IMT_Zscore
Numeric X's:         TC_HDL_Ratio,VitD3
Categorical X's:    Smk
  Default Recoding Scheme:  Binary
  Default Reference Value:  First after Sorting
Weights:             <Empty>

```

-- Regression Model -----

```

Terms:                1-Way
Remove Intercept      Unchecked

```

Reports Tab

```

-- Alphas and Confidence Levels -----
Tests Alpha:          0.050
Assumptions Alpha:   0.20
Confidence Level:    95

```

Multiple Regression Report

Dataset D:\...\2020_CCIMT_MVA_NCSS\2020_CCIMT_Data_NCSS_Final1.NCSS
 Dependent IMT_Zscore

Procedure Input Settings (Continued)

Reports Tab (Continued)

-- Select Reports -----	
.. Summaries	
Run Summary	Checked
Descriptive Statistics	Checked
Correlations	Checked
.. Regression Coefficients	
Coefficient T-Tests	Checked
Coefficient C.I.'s	Checked
Estimated Equation	Checked
Bootstrap C.I.'s	Unchecked
.. ANOVA	
ANOVA Summary	Checked
ANOVA Detail	Checked
.. Assumptions	
PRESS Statistics	Checked
Normality Tests	Checked
Durbin-Watson	Checked
.. X Diagnostics	
R ²	Checked
Variable Omission	Checked
Sum of Squares	Checked
Sequential Models	Unchecked
Multicollinearity	Checked
.. Eigenvalues	
Eigenvalues - Centered	Checked
Eigenvectors - Centered	Checked
Eigenvalues - Uncentered	Unchecked
Eigenvectors - Uncentered	Unchecked
.. Row-by-Row Lists	
Show:	All Rows
Predicted Values for Means	Unchecked
Predicted Values for Individuals	Checked
Residuals	Checked
Regression Diagnostics	Checked
DFBETAS	Checked

Report Options Tab

-- Variable Labels -----	
Variable Names:	Names
Stagger label and output if label length is ≥	15

Multiple Regression Report

Dataset D:\...\2020_CCIMT_MVA_NCSS\2020_CCIMT_Data_NCSS_Final1.NCSS
 Dependent IMT_Zscore

Procedure Input Settings (Continued)

Report Options Tab (Continued)

-- Decimal Places -----

Precision:	Single
Reg Coefficients:	All
Std Error of b's:	All
Test Statistics:	3
Probabilities:	4
Percentages:	3
Means:	All
Std Deviations:	All
R ² , Correlations, Standardized Coef's:	4
Mean Squares, Sum of Squares:	All
Y's, Residuals, etc.:	All
Std Error of Y:	All
Eigenvalues:	4
Eigenvectors:	4
Diagonal of X'X Inverse:	All

Plots Tab

-- Select Plots -----

-- Distribution of Residuals -----

Histogram	Checked
Probability Plot	Checked

-- Y vs X -----

Y vs X	Unchecked
--------	-----------

-- Residual Analysis Plots -----

Serial Correlation	Unchecked
Resids vs Row	Unchecked
RStudent vs Hat	Unchecked
Resids vs Yhat	Unchecked
Resids vs X	Checked
RStudent vs X	Unchecked
Partial Resids vs X	Unchecked

-- Bootstrap Histograms -----

Coefficient C.I.'s	Checked
--------------------	---------

Storage Tab

-- Data Storage Options -----

Storage Option:	Store in designated columns
Store First Item In:	C33

Multiple Regression Report

Dataset D:\...\2020_CCIMT_MVA_NCSSL\2020_CCIMT_Data_NCSSL_Final1.NCSS
 Dependent IMT_Zscore

Procedure Input Settings (Continued)

Storage Tab (Continued)

.. Select Items to Store with the Dataset

Predicted Y	Checked
Residuals	Unchecked
Std Error of Pred Mean	Unchecked
Lower C.L. Mean	Unchecked
Upper C.L. Mean	Unchecked
Std Error of Pred Individual	Unchecked
Lower C.L. Individual	Unchecked
Upper C.L. Individual	Unchecked
X'X Inverse	Unchecked
Expanded X Matrix	Unchecked
Rstudent	Unchecked
Hat Diagonals	Unchecked
CovRatio	Unchecked
Dffits	Unchecked
MSE(i)	Unchecked
Cook's D	Unchecked
DFBETAS	Unchecked
VC(Betas) Matrix	Unchecked